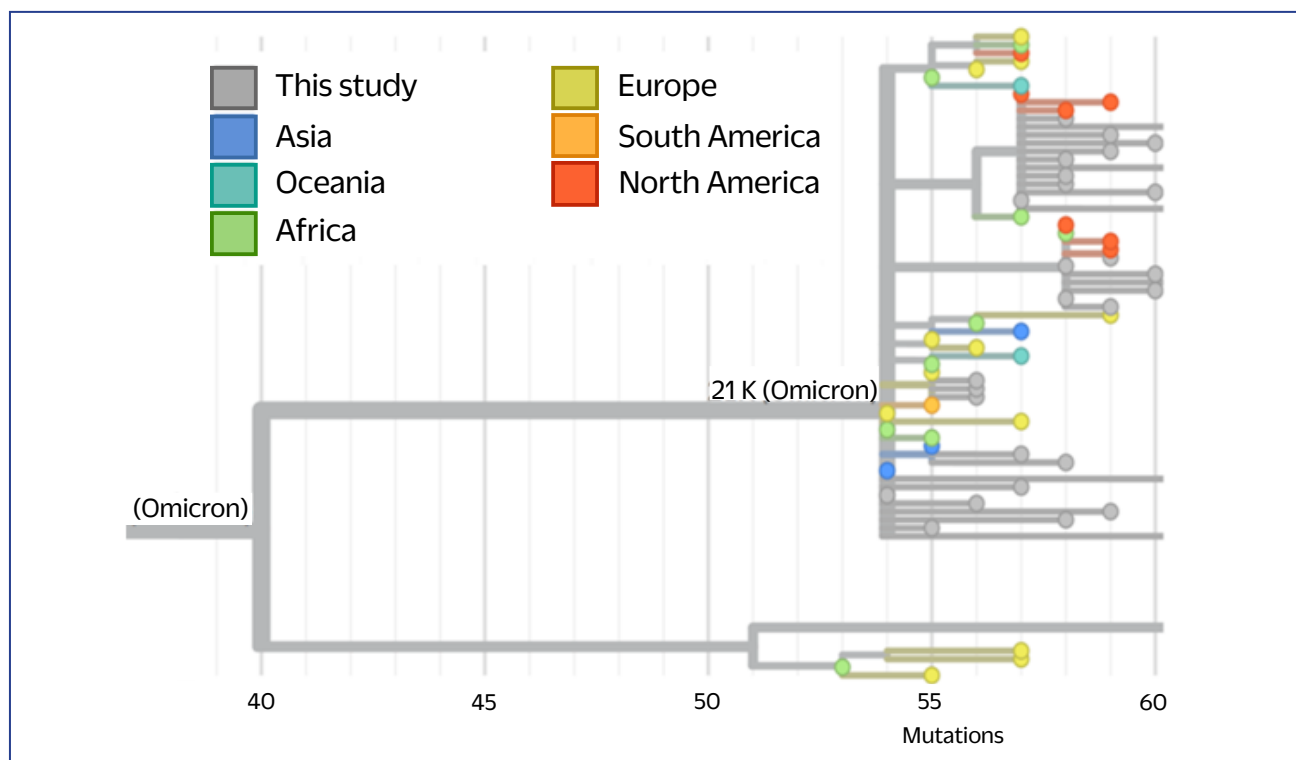


Supplementary Fig. 1. **Phylogenetic tree highlighting the relationship of 32 Omicron variant sequences detected in central Viet Nam to origins of other known sequences, 8 November–31 December 2021**



Source: GISAID [online database]. Munich: Friends of GISAID; 2021 (gisaid.org, accessed 20 January 2022).

Supplementary Fig. 2. **GISAID accession numbers for identified sequences<sup>a</sup>**

EPI_ISL_8994199	EPI_ISL_8994210	EPI_ISL_9003839	EPI_ISL_9003848
EPI_ISL_8994187	EPI_ISL_8994202	EPI_ISL_9003868	EPI_ISL_9003854
EPI_ISL_8994211	EPI_ISL_8994188	EPI_ISL_9003850	EPI_ISL_9003843
EPI_ISL_8994209	EPI_ISL_8936412	EPI_ISL_9003871	EPI_ISL_9003835
EPI_ISL_8994197	EPI_ISL_8979248	EPI_ISL_9003852	EPI_ISL_9003860
EPI_ISL_8994201	EPI_ISL_8979247	EPI_ISL_9003846	EPI_ISL_9003864
EPI_ISL_8994204	EPI_ISL_9003853	EPI_ISL_9003841	EPI_ISL_9003870
EPI_ISL_8994192	EPI_ISL_9003865	EPI_ISL_9003858	EPI_ISL_9003866

<sup>a</sup> Dataset generated from GISAID EpiFlu™ database, 2021.

Source: GISAID [online database]. Munich: Friends of GISAID; 2021 (gisaid.org/, accessed 20 January 2022).