

Supplementary Table 1. **Public health interventions to prevent transmission from flights to Viet Nam, 2020**

Starting date	Actions
1 January	Temperature screening ^a for passengers from Hubei, China at all entry points (airport, sea, land) in Viet Nam
6 March	Case finding and contact tracing for all passengers on flights with identified infected case(s) Mandatory health declaration for all inbound passengers from international flights
14 March	SARS-CoV-2 testing at arrival and quarantine for passengers from the United Kingdom of Great Britain and Northern Ireland and all 26 countries in the Schengen Area
18 March	Expanded SARS-CoV-2 testing upon arrival and quarantine for passengers from the United States, selected South-East Asian countries ^b and Russia
21 March	SARS-CoV-2 testing upon arrival and quarantine for all passengers from international flights regardless of place of departure
28 March	All international flights halted

^a Including both forehead temperature measurement and heat imaging.

^b Brunei Darussalam, Cambodia, Indonesia, Lao People's Democratic Republic, Malaysia, Myanmar, the Philippines, Singapore and Thailand.

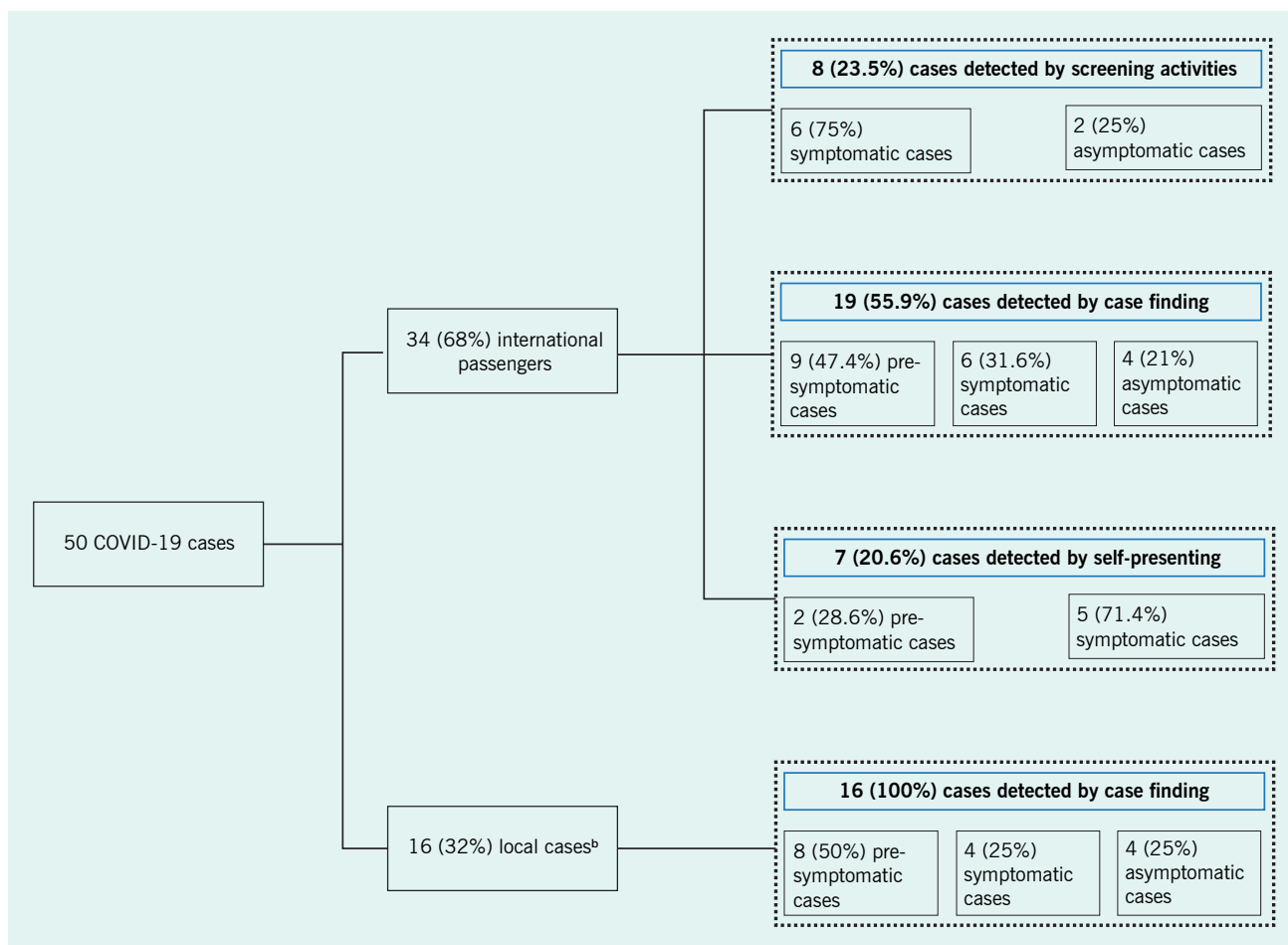
Supplementary Table 2. **Symptoms at onset and number of symptoms during infection^a of 40 pre-symptomatic and symptomatic cases**

	<i>n</i>	%
Symptoms at onset ^b		
Cough	28	70
Fever	10	25
Sputum production	5	12.5
Sore throat	4	10
Headache	4	10
Fatigue	3	7.5
Nasal congestion	1	2.5
Diarrhoea	1	2.5
Chill	1	2.5
Total number of symptoms during infection		
1	12	30
2	8	20
3	8	20
4	3	7.5
5	3	7.5
6+	6	15

^a Combined symptoms at onset and during treatment/isolation.

^b Cases could have more than one symptom.

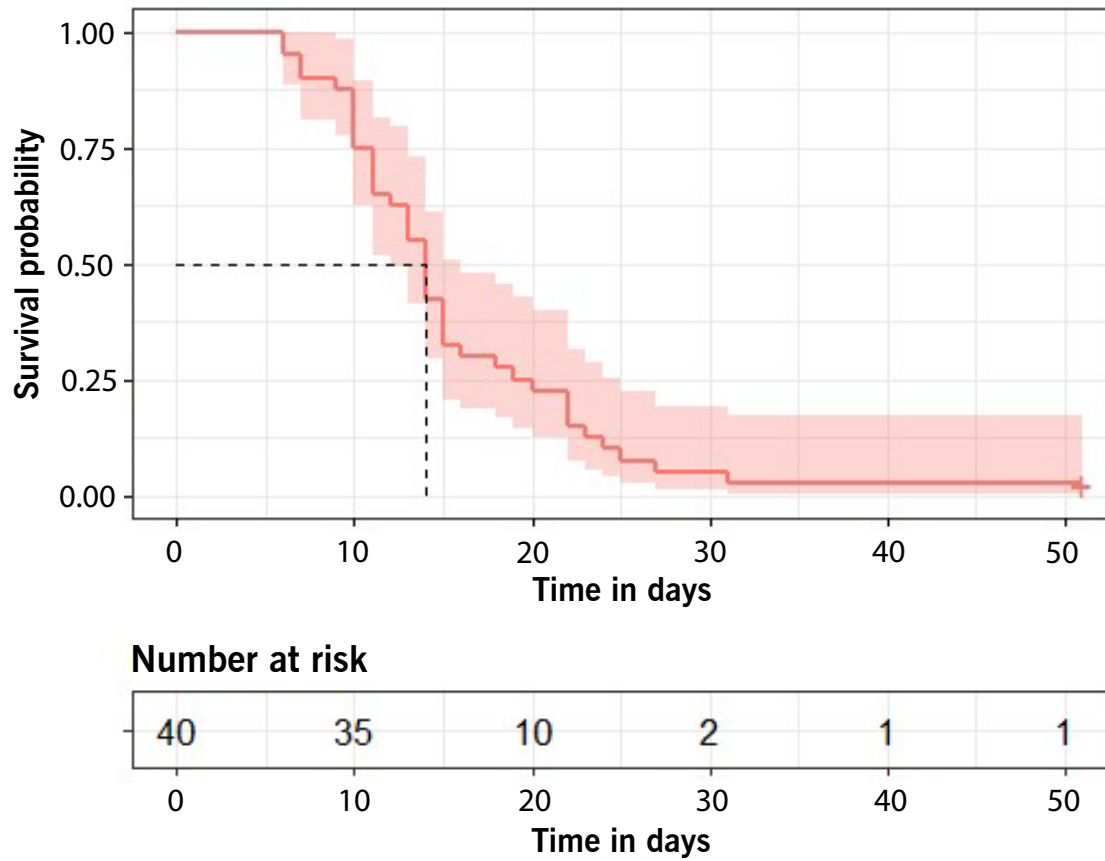
Supplementary Fig. 1. **Methods of case detection^a of 50 cases in Viet Nam**



^a Methods of case detection included: 1) screening activities (i.e. mandatory testing and quarantine immediately upon international arrival); 2) case finding (i.e. epidemiological investigations); and 3) self-presenting at health facilities.

^b All 16 local cases were close contacts of the 34 international passengers.

Supplementary Fig. 2. **Cumulative probability of clearance of SARS-CoV-2 infection by time in days from symptom onset for 40 pre-symptomatic and symptomatic cases**



The survival probability was estimated using the Kaplan-Meier estimator.